

## Personalize Your PDA Phone

### A. Change the Today screen

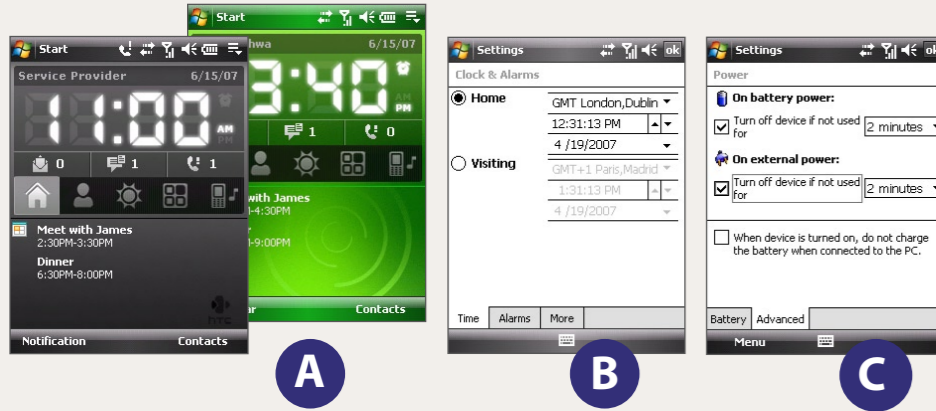
Tap **Start** > **Settings** > **Personal** tab > **Today**.

### B. Set the date and time

Tap **Start** > **Settings** > **System** tab > **Clock & Alarm** > **Time** tab.

### C. Manage power settings

Tap **Start** > **Settings** > **System** tab > **Power** > **Advanced** tab.



## Go Online and Surf the Web

Go online by turning on Wi-Fi® on your device.

**Note** If there is no Wi-Fi hotspot in your area, you can still connect to the Internet by using the GPRS/3G or dial-up service of your wireless service provider. Refer to the User Manual to learn how to connect using GPRS/3G or dial up.



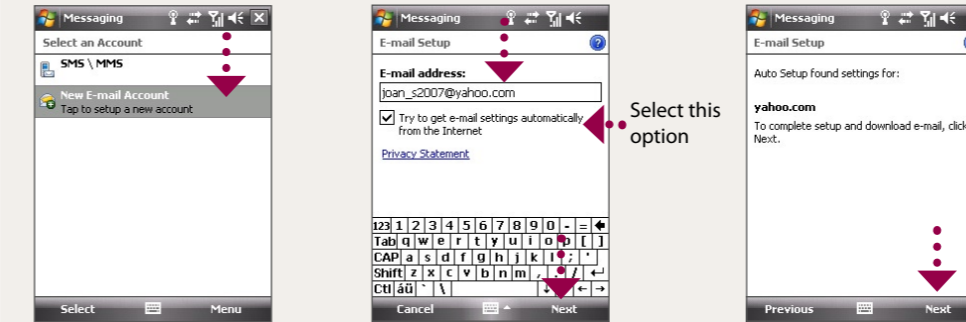
- 1 Tap **Start** > **Programs** > **Comm Manager** and tap the **WLAN** button.
- 2 Select the wireless network you want to connect to and tap **OK**.
- 3 Select **The Internet** and tap **Connect**.

**Note** If you are connecting to a secured wireless network, you may need to enter a **Key** for that network connection before you can connect to it.

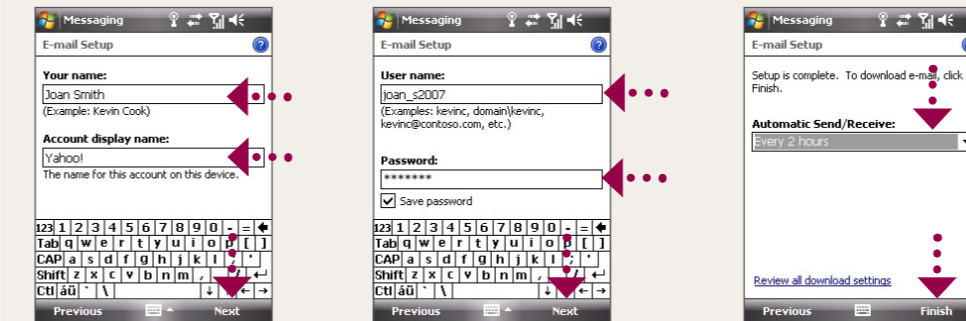
Use Internet Explorer® Mobile (tap **Start** > **Internet Explorer**) to surf the Web.

## Get E-mail Using Your PDA Phone

Get your e-mail on your device. Set up your device so you can send and receive e-mails using your favorite e-mail service.



- 1 Tap **Start** > **Messaging** > **New E-mail Account**.
- 2 Type in your **E-mail address** and tap **Next**.
- 3 Tap **Next**. If unsuccessful, you need to manually enter the settings in the succeeding screens.



- 4 Type in **Your Name** and **Account display name**. Tap **Next**.
- 5 Type in the **User name** and **Password** for the e-mail account. Tap **Next**.
- 6 Select the frequency to send and receive e-mail. Tap **Finish**.

You can synchronize your device with your company's Microsoft Exchange server so you get your company e-mails on your device.

Refer to the user manual to learn how to get your company e-mails on your device.

## Read Me First

This **Read Me First** will help you get started with using your Windows Mobile® 6 Professional powered device. We recommend that you have this guide handy when you start using your device.

For a more complete reference, consult the User Manual that came with the device.



## Secure Your PDA Phone

Protect your device from unauthorized access by enabling the SIM PIN and/or Device lock.

### A. To enable SIM PIN

Enabling the SIM PIN requires you to enter a password first before you can use the phone features of the device.

You can enable the SIM PIN by tapping **Start** > **Settings** > **Personal** tab > **Phone** and selecting **Require PIN when phone is used**.

### B. To enable device lock

Enabling the device lock requires you to enter a password to unlock the device after it has been left idle for a set period of time.

1. Tap **Start** > **Settings** > **Personal** tab > **Lock**.
2. Select the **Prompt if device unused for** check box and enter the time you want.
3. Select the **Password** type.
4. Enter and confirm the password, then tap **OK**.

### C. To enable key lock

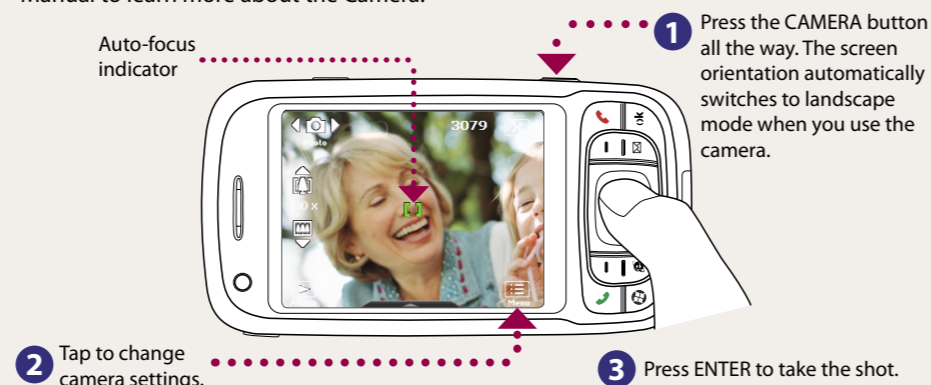
Enabling key lock helps prevent accidental key presses when the device is in your pocket or bag.

Lock the keys by tapping the Launcher tab ( ) on HTC Home and then tapping . To unlock, tap **Unlock**.

## Take a Picture

Take out your device and capture those precious moments.

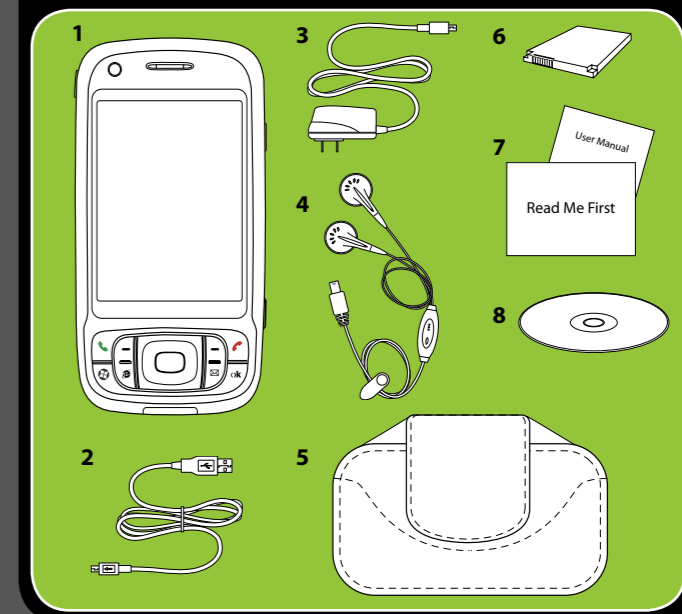
The photo is automatically saved in your device after you shoot unless you choose to delete it in the Review screen. Press to send the photo via MMS or e-mail. Refer to the User Manual to learn more about the Camera.



The camera comes with an auto-focus function to let you capture sharp and crisp photos and videos of your subjects. Depending on the option you have chosen in **Shoot Option**, you will need to either press the CAMERA button half-way or all the way to take a photo.

## What's in the Box

These are the items that you should find inside the box.



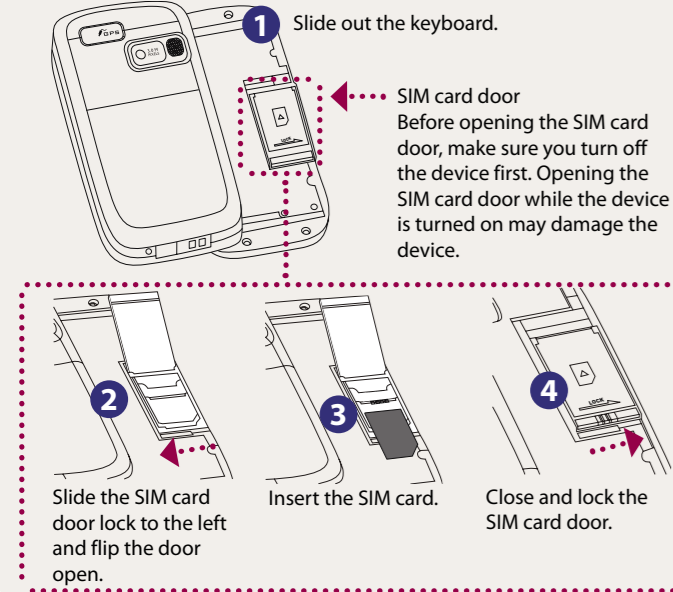
1. PDA phone
2. USB Sync Cable
3. AC Adapter
4. Stereo Headset
5. Pouch
6. Battery
7. User Manual, Read Me First
8. Getting Started Disc

www.htc.com

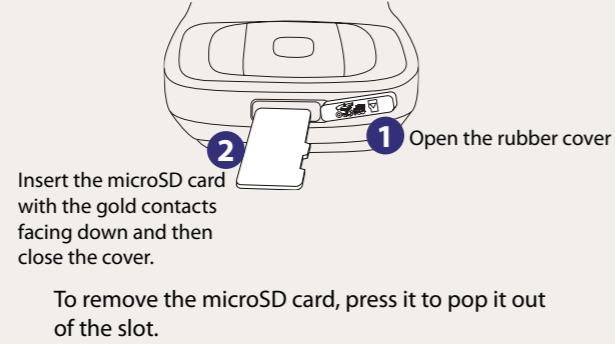


## Before You Turn On ...

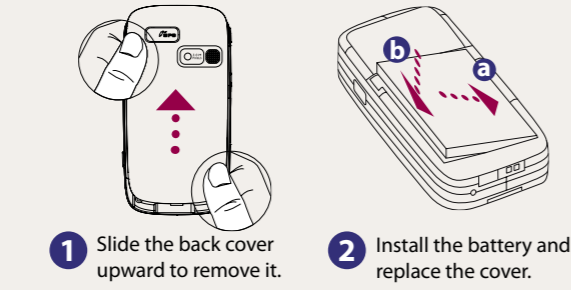
### A. Install the SIM Card



### B. Install a microSD™ card (not included in box)

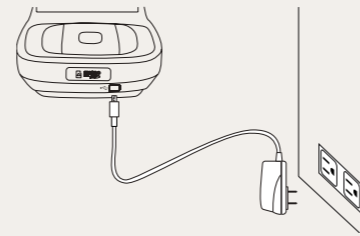


### C. Install the battery

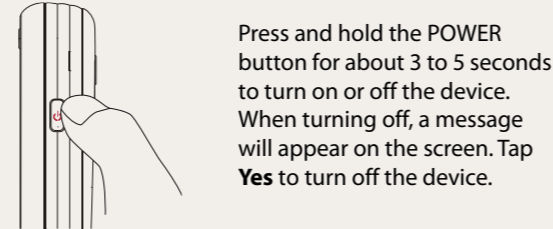


### D. Charge the battery

The battery is not fully charged out of the box. Charge the battery by plugging the AC adapter plug to an electrical outlet and plugging the USB end to the sync connector port at the bottom of the device. The battery is fully charged after about 3 hours of charging.

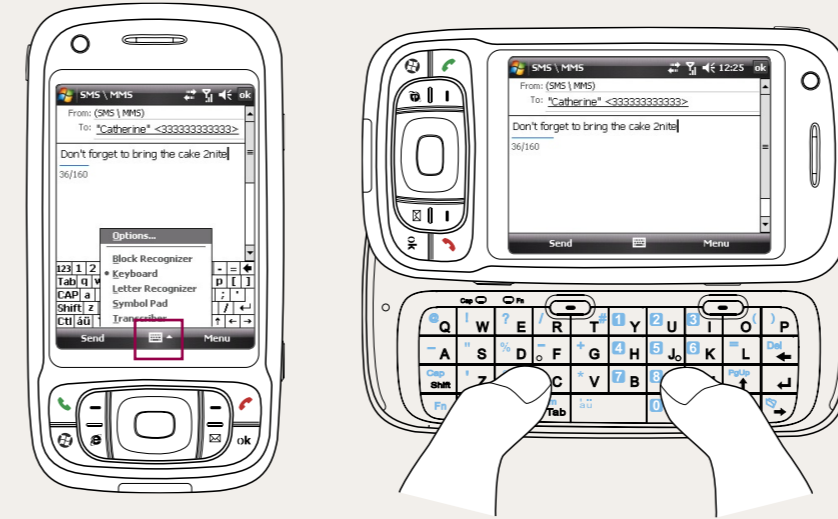


### E. Turn on/off the device



## Enter Information

The device comes with various onscreen input methods and a slide-out QWERTY keyboard. Use the preferred input method to enter information and type messages on the device.



When using the onscreen input method, tap the arrow beside the input method icon to open a menu where you can select the input method to use.

## Synchronize Your PDA Phone and PC

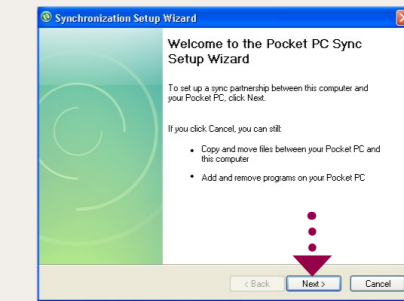
Synchronize your PC with your device to keep information such as contacts, tasks, and appointments up-to-date on your device.

### Set up synchronization software on your PC

Depending on the Operating System (OS) of your PC, you will need either Microsoft ActiveSync® 4.5 (or later) or Windows Mobile® Device Center to synchronize your device with your PC.

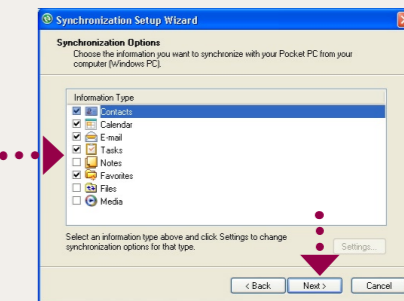
### Set up ActiveSync on Windows XP

1 Install ActiveSync 4.5 on your PC from the Getting Started Disc.



2 Connect your device to your PC. The Synchronization Setup Wizard automatically starts and guides you to create a synchronization partnership. Click **Next** to proceed.

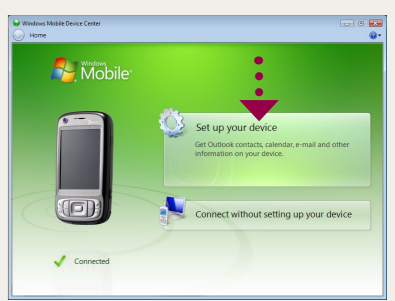
3 To synchronize your device with your PC, clear the **Synchronize directly with a server running Microsoft Exchange** check box and click **Next**.



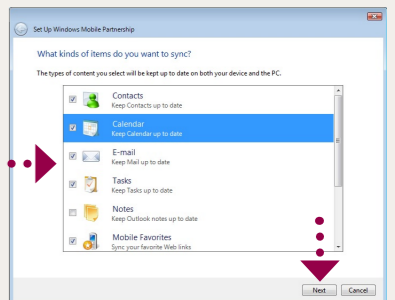
4 Select the information types that you want to synchronize, then click **Next**.

5 Click **Finish**.

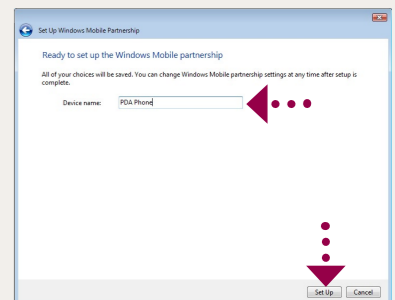
### Set up Windows Mobile Device Center on Windows Vista®



1 Connect your device to your PC. Windows Mobile Device Center will open. On the screen, click **Set up your device**.

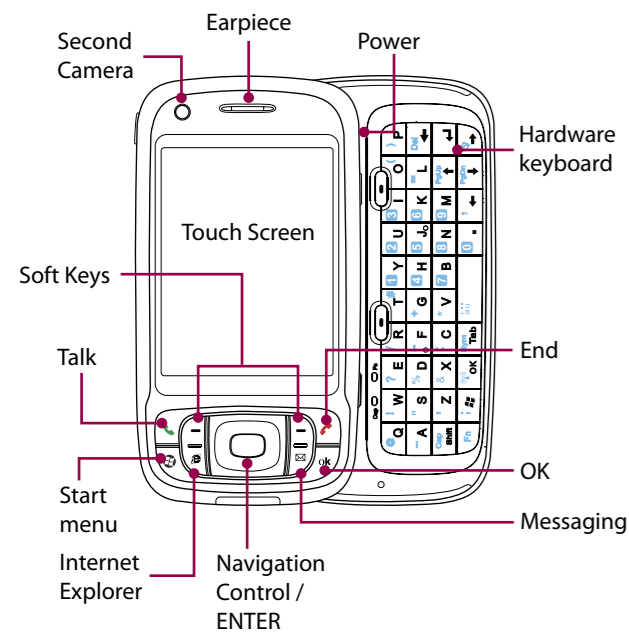


2 Select the information you want to synchronize and click **Next**.



3 Type in a name for your PDA phone and click **Set Up**.

## The PDA Phone



## HTC Home

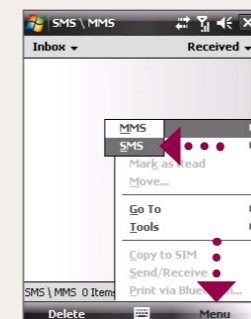
HTC Home™ is a Today screen plug-in that gives you up-to-date local information at a glance, such as time, day and weather information, and shows new messages and missed calls. HTC Home also has 3 other tabs that let you quickly access your frequently-called contacts, often-used or accessed programs or device settings, and sound settings.



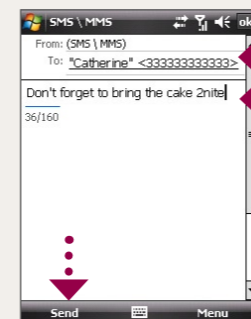
## Send a Text Message

Send out short text messages to another mobile phone.

1 Tap **Start > Messaging > SMS \ MMS**.



2 Tap **Menu > New > SMS**.



3 Enter the mobile phone number\* in **To** and then write your message. Tap **Send**.

\* You can also tap **To** to choose a contact from your SIM card or Contacts list.

## Make a Voice or Video Call

### To make a voice call

Press . On the phone screen, tap the phone number you want to call and press on your device.

### To make a video call

Press . On the phone screen, tap the phone number you want to call and tap on the phone screen. Refer to the User Manual for more details.



For hands-free operation, connect your device with the wired headset or Bluetooth® headset (not included) to your device.

To learn how to connect a Bluetooth headset to your device, refer to the User Manual.